

Townhall Events

The Master Plan Update Subcommittee opted for two public engagement efforts: townhall events and a survey. Both efforts invited city residents and stakeholders to share their opinions about the Master Plan update topic areas: Downtown, Transportation, Housing, and Environment, Resilience, and Sustainability.

Two townhall events were held at the Liberty School on October 27, 2022 and November 15, 2022. Attendees shared and discussed the Master Plan update topics in an open format and in small-group breakout sessions. Subcommittee members and city staff recorded attendees' comments and responded to questions. Eight (8) people attended the October 27, 2022 event, and thirty (30) people attended the November 15, 2022 event.

Draft summaries of the comments and discussion from each townhall are provided below.

OCTOBER 27, 2022 TOWNHALL

Downtown

- Desire to see dedicated event space
- Fans of White Pine and the Bookstore
- Concern over the speed of traffic in downtown
- Want to address and fill empty storefronts
- More variety with existing retail and rest
- Missing more retail and "things to do"
- Desire to see underground parking at Gunther site with mixed-use on top
- Want to see more foot traffic brought into the downtown
- Desire to see left turn signals and a pedestrian scramble at the four-corners

Housing

- More senior housing projects
- Support for ADU work and lot coverage adjustments
- Lack of single-level homes
- Homes currently being built in Saline are "too large and too close together"
- Mild comfort with smaller lots
- Concerns over annexation of new properties
- Desire for Staff to work with non-profits (Habitat, Housing Bureau for Seniors) to find solutions for folks
- Lack of transitional housing
- Desire for very intentionally located multi-family projects

Transportation

- People's Express is very inconsistent
- Many are using AARP ride program and "The Ride @ SOT"
- Desire for the City to look into the WAVE

Environment, Sustainability, Resilience

- Investment in accessible equipment ("14% of SASD is special needs")
- Interest in starting a parks foundation
- Dog park should not be open to water
- Extend to Wayne Clemons Trail
- Curtis Park is dirty and needs rehab
- We should prioritize protecting our water resources
- Whatever City does, make it clear what improvements we want.

NOVEMBER 17, 2022 TOWNHALL

Downtown

Positives

- Established businesses
- Visually appealing
- Plenty of parking
- Not blighted and updated interiors
- Inherent sense of place
- It is the center of the City
- Historic homes
- Good density

Negatives

- Space not utilized the best
- Want a redefined square and dedicated public space
- Heavy traffic
- Not safe for pedestrians – want All Stop/Scramble
- Want a by-pass for US-12
- Want MDOT to tackle the traffic issue
- No public transportation access to downtown
- Lack of sidewalk that fully connects to downtown
- Poor connectivity with Henne Field
- Poor wayfinding and signage
- No EV charging stations
- Fire code restrictions

Wants

- Preservation of historic homes
- Dedicated downtown public space
- EV Charging Stations
- Review of zoning to make sure it matches our intent/vision

Housing

Summary not available.

Transportation

- Familiar with people using it but have not using it them
- Have always wondering why there is not AATA service. We should be a part of that network. Need to tie Ann Arbor and Ypsi into Saline.
- Have a lot of U of M employees here.
- Would even do a drive to Walmart then into Ann Arbor
- For disabled staff there needs to be something more flexible.

- Express routes would even be an update.
- Feel like if a local route system does not connect to a broader system that it might not be highly used. Might be useful for those with disability since it's a shorter commute around town.
- Not a lot of walking route options in Saline. Happy that he can get from Northview sub all the way to Ann Arbor on paved pathways now.
- Only a couple places to cross Ann Arbor Saline and Michigan Avenue
- Want to see trails enhanced. Feel like we are not enacting the non motorized plan.
- Bridge between Mill Pond Park and Stonecliff. It keeps coming up but nothing happens.
- Teft Park was a great trail 26 years ago but has not been maintained. Its all grass covered now. At least get it back up to a gravel path.
- Maple Road making the connection on the east side in front of Lectronics and the Court House.
- Crosswalk in front of the library. Consider doing an enhanced crossing there.
- Better enforcement of speeds on Maple especially at school times.
- Michigan Ave is a huge barrier between north and south side of the city. We have to work more with MDOT to figure out how to safely cross pedestrians and bikes in more places.
- Connect the railroad track behind Maple Oaks to Industrial.
- Sidewalks along Monroe are in bad shape so Salt Spring is nice but hard to get to.
- Connector of People's Park to Salt Spring Park. There is a lack of ability to get easily from
- Saline Ann Arbor to Monroe.
- Dog Park in Brecon with a walking path in there.
- More crosswalks in general needed. A lot of residential intersections don't have multi
- Directional crossing. More mid-block crossing.
- Pedestrian scramble downtown.
- What can we do to slow cars down and change the culture of driving everywhere.
- [Resident] interested in a forming a Friends of the Saline Parks type group – to promote.
- Absolutely want to see us more connected to Ann Arbor and Ypsi – need more access points to other communities besides ours. Should be both public transit and non motorized means of access.
- The new Pulte development needs to connect all the way to Maple and Woodland but no sidewalk along the outside of Maplewood.
- Maple is such an essential corridor and it is under-looked—it has the schools, the post office, the library, the courts. We should have a more dedicated plan for that area to make sure it is pedestrian safe. It feels like a patchwork now. Especially with the entrance to the back of Busch's with the cars there. Maybe put a pathway to the grocery store – might require some working with Faurcia to put part of it on their property.
- [Resident] would be interested in a task force on autonomous vehicles.

Environment, Sustainability, Resilience

Downtown Specific

- No green space in downtown
- Want dedicated green square
- EV charging stations in City lots
- Lack of walkways downtown Interest in having farmers market as green space
- Potentially "partition" or subdivide the Gunther Lot
- Consider "green" roofing and downtown roof space

Henne Field Specific

- Should leverage Henne Field
- Henne Field has "potential"
- No wayfinding to Henne Field
- Better opening by Union School

Mill Pond Specific

- Should have parking by the dam
- Should have a better path connecting Curtis
- Should be connected to Torwood
- Interest in having kayaking on the river
- Mill Pond should be connected to all other parks via non-motorized paths
- Consensus that Dam should be removed

General

- We should "bolster" our parks
- Have alternative transportation/paths/options around the City
- City should put solar panels above parking structures
- Impervious surface policy was an area of interest
- Desire for City to accelerate trail development
- Want more adult interaction at parks
- Want more station parks
- Desire for public music items

Survey Results

MASTER PLAN UPDATE

Draft Community Engagement Summary

The Master Plan Update Subcommittee opted for two public engagement efforts: townhall events and a survey. Both efforts invited city residents and stakeholders to share their opinions about the Master Plan update topic areas: Downtown, Transportation, Housing, and Environment, Resilience, and Sustainability.

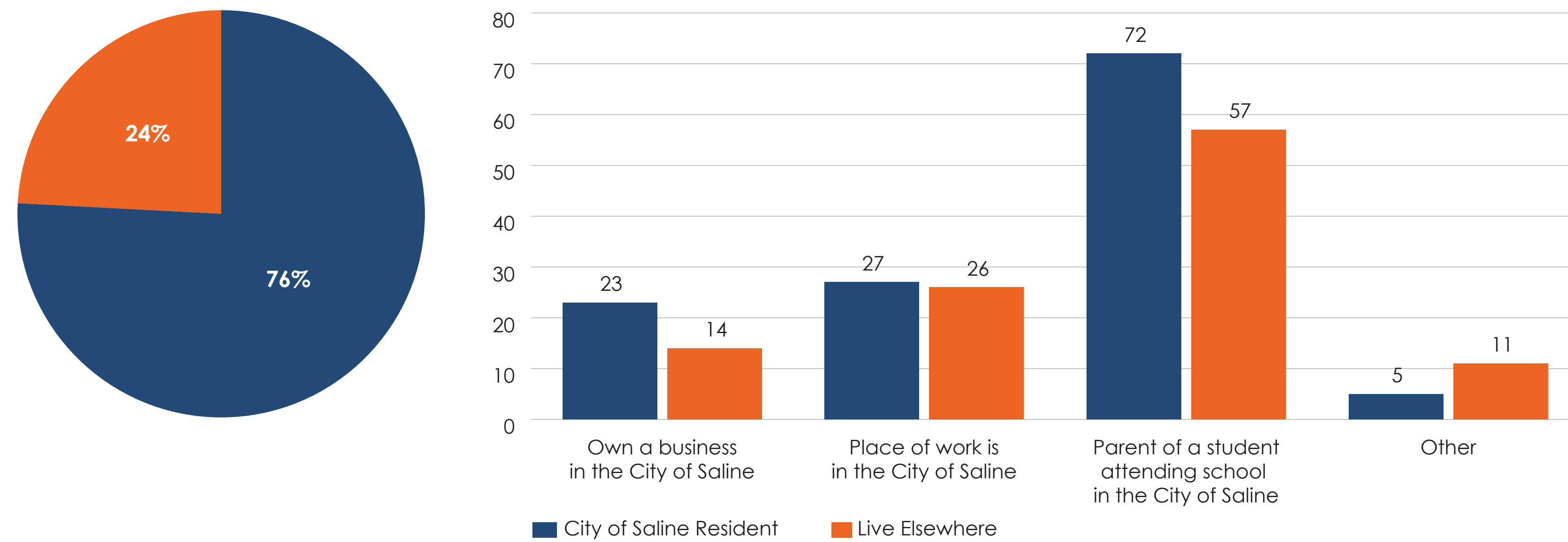
The survey was announced and electronically distributed through the City's emails lists, website, and social media platforms. The Saline Area Schools also distributed the survey through their email lists. Respondents had the option to complete the survey online through a link shared in the announcement, or to request a paper copy from the city office. All of the survey responses were submitted electronically. Answers to open-ended questions will be coded and included in the draft Master Plan document.

RESPONDENT DEMOGRAPHICS

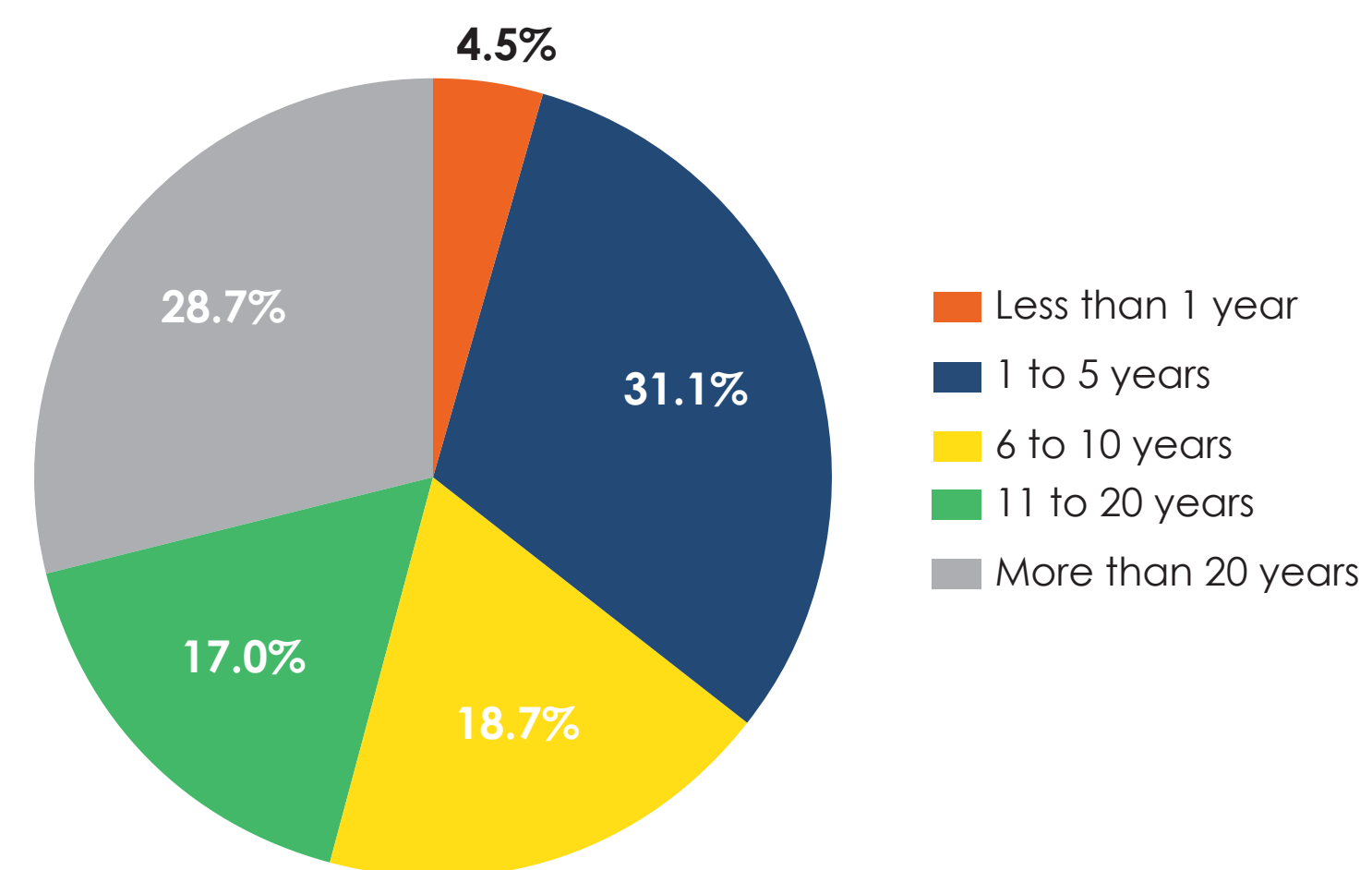
Total Survey Responses: 378

DOWNTOWN

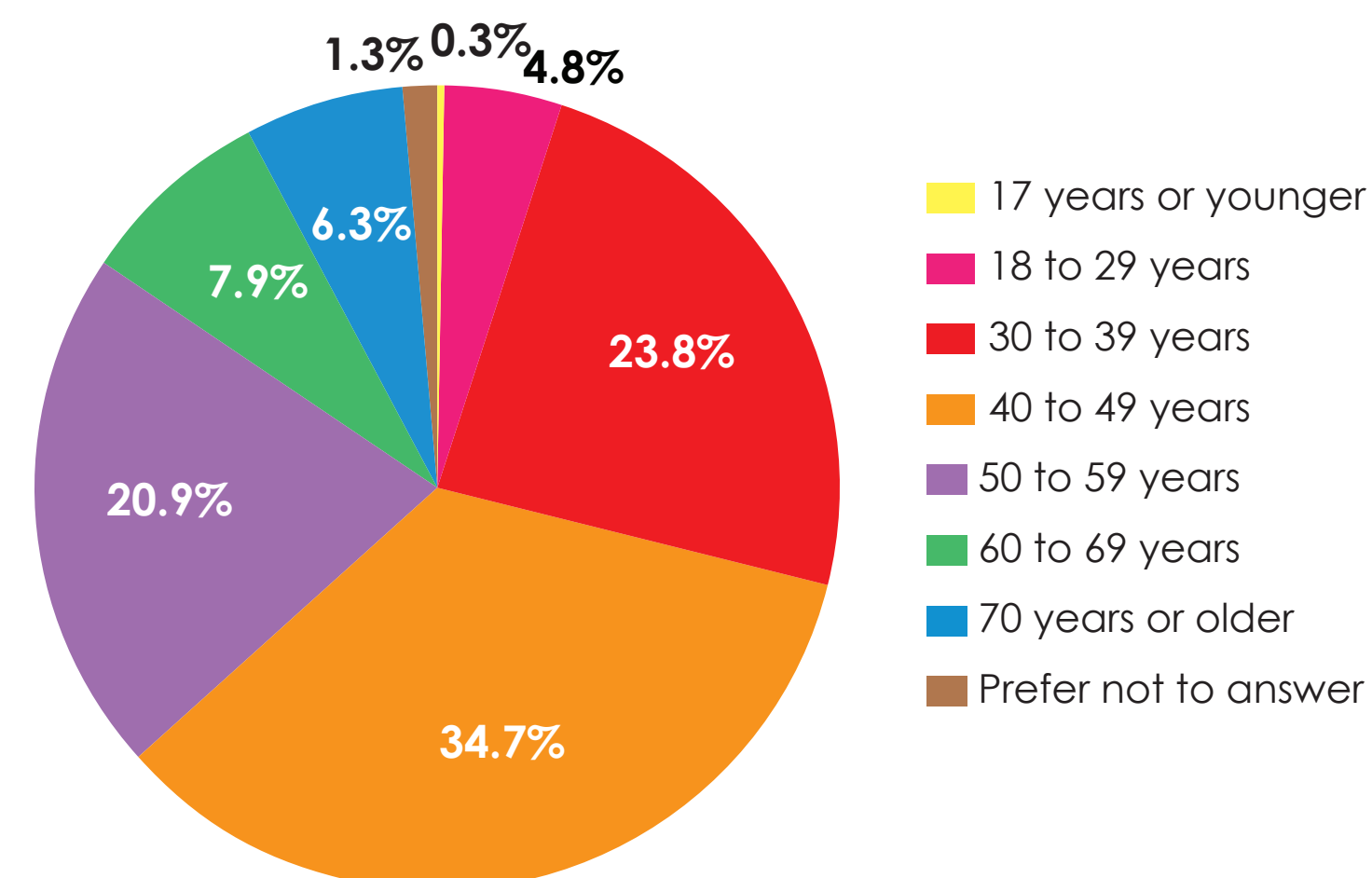
Q1. What is your relationship to the City of Saline? (Select all that apply)



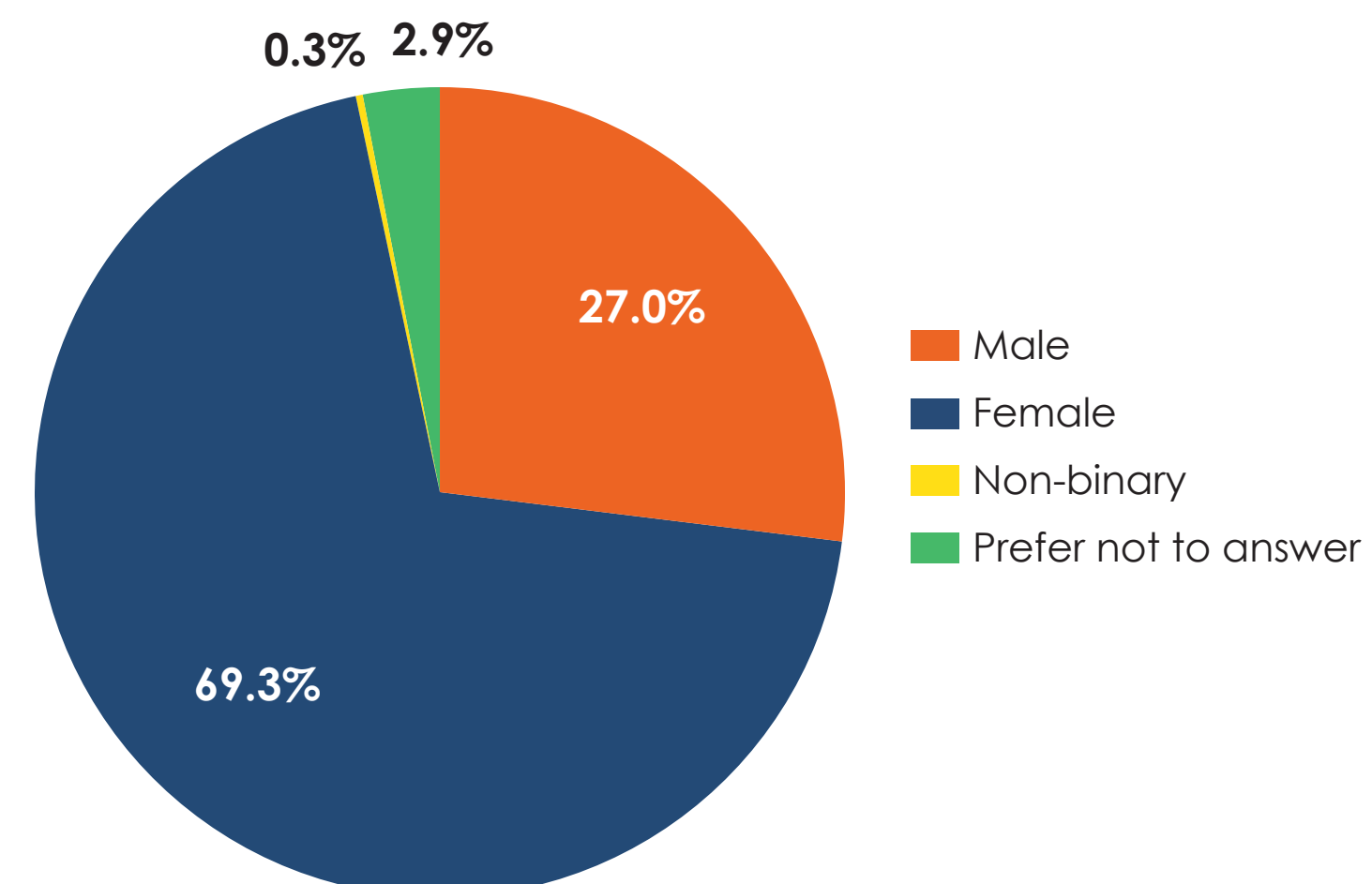
Q2. How long have you lived in the City of Saline?



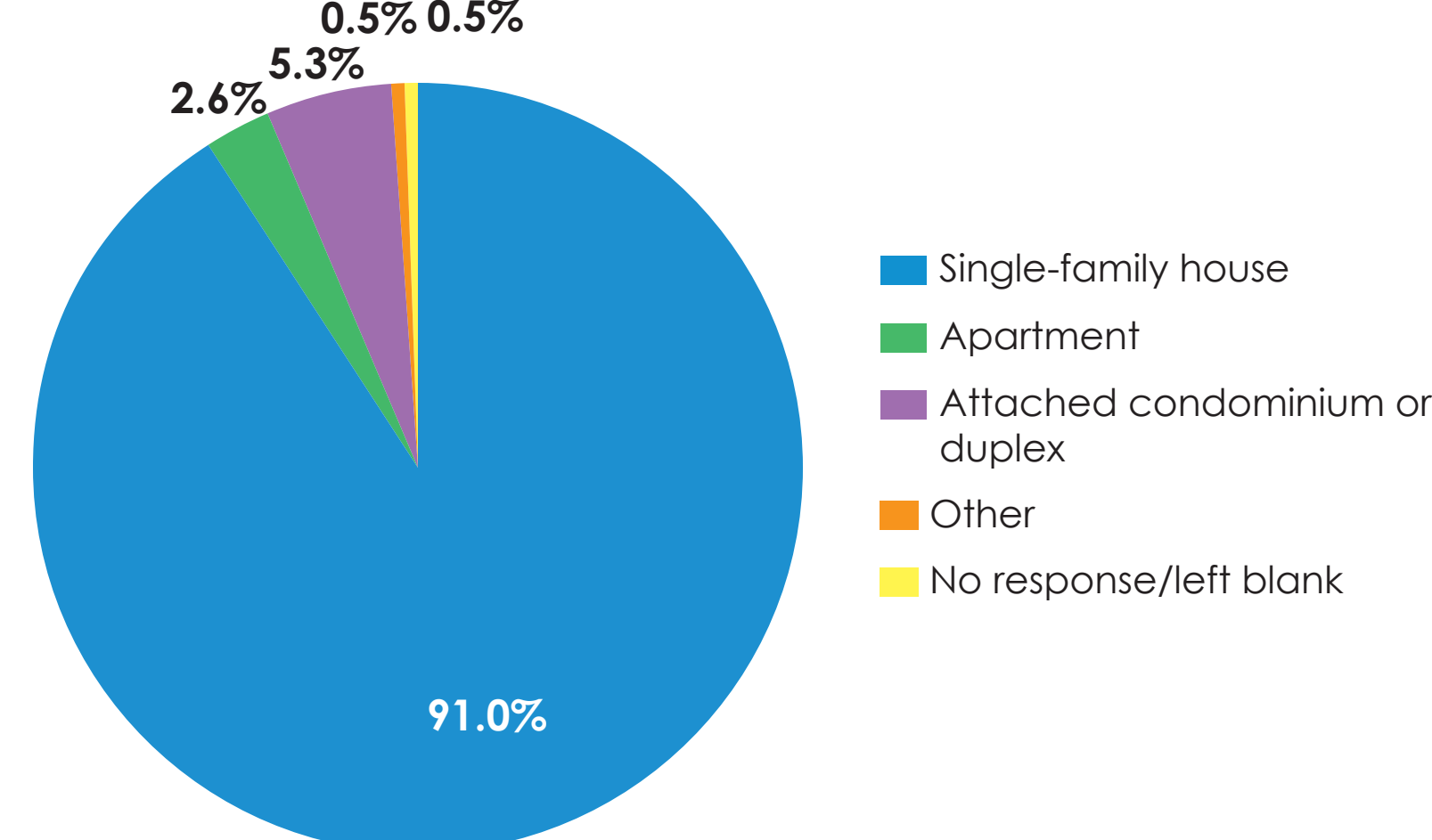
Q4. What is your age?



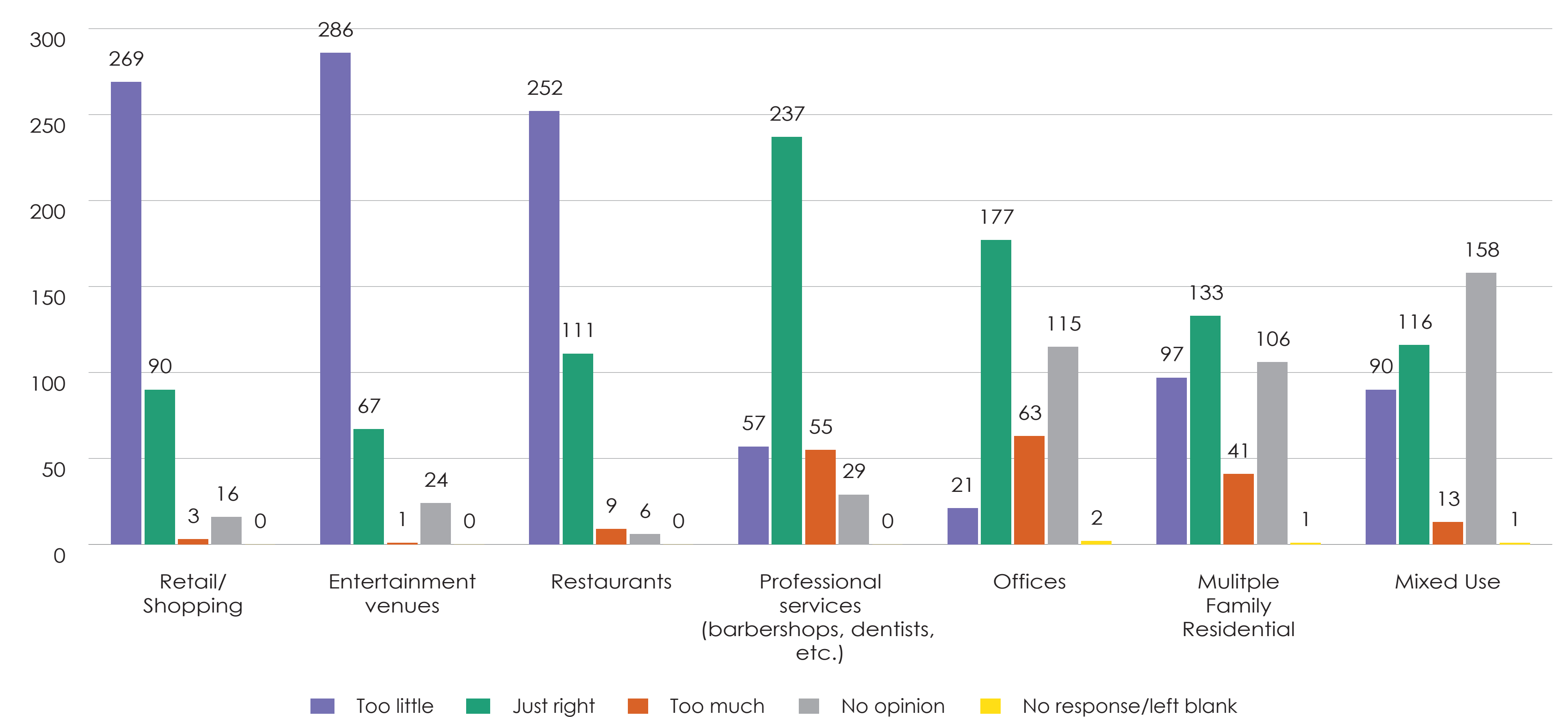
Q5. What is your gender identity?



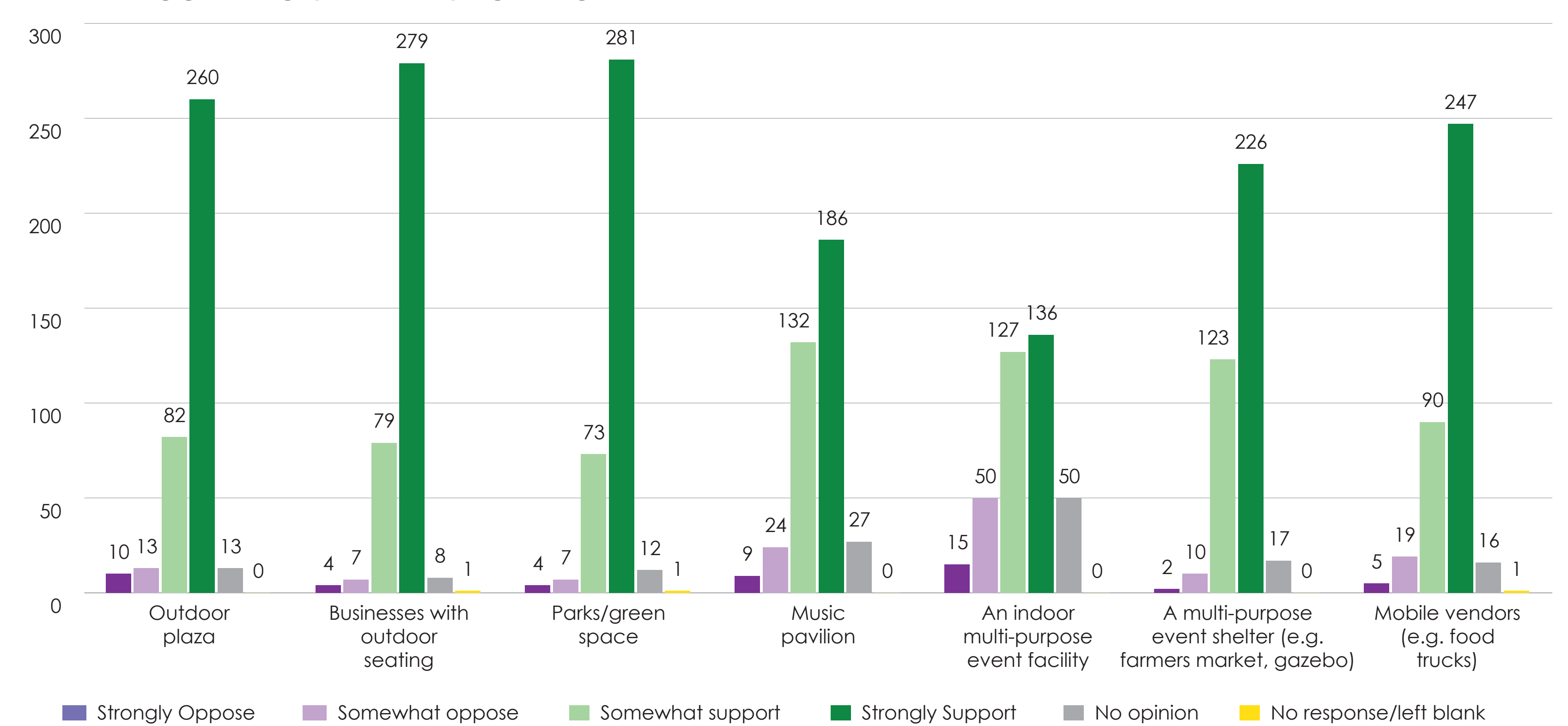
Q6. Please select the term that best describes your residence:



Q7. Please rate the availability of the following land uses in the City's downtown:



Q8. Downtown gathering spaces have been identified as a want or need by some in the community. How much do you support the following gathering spaces and programing in downtown Saline?



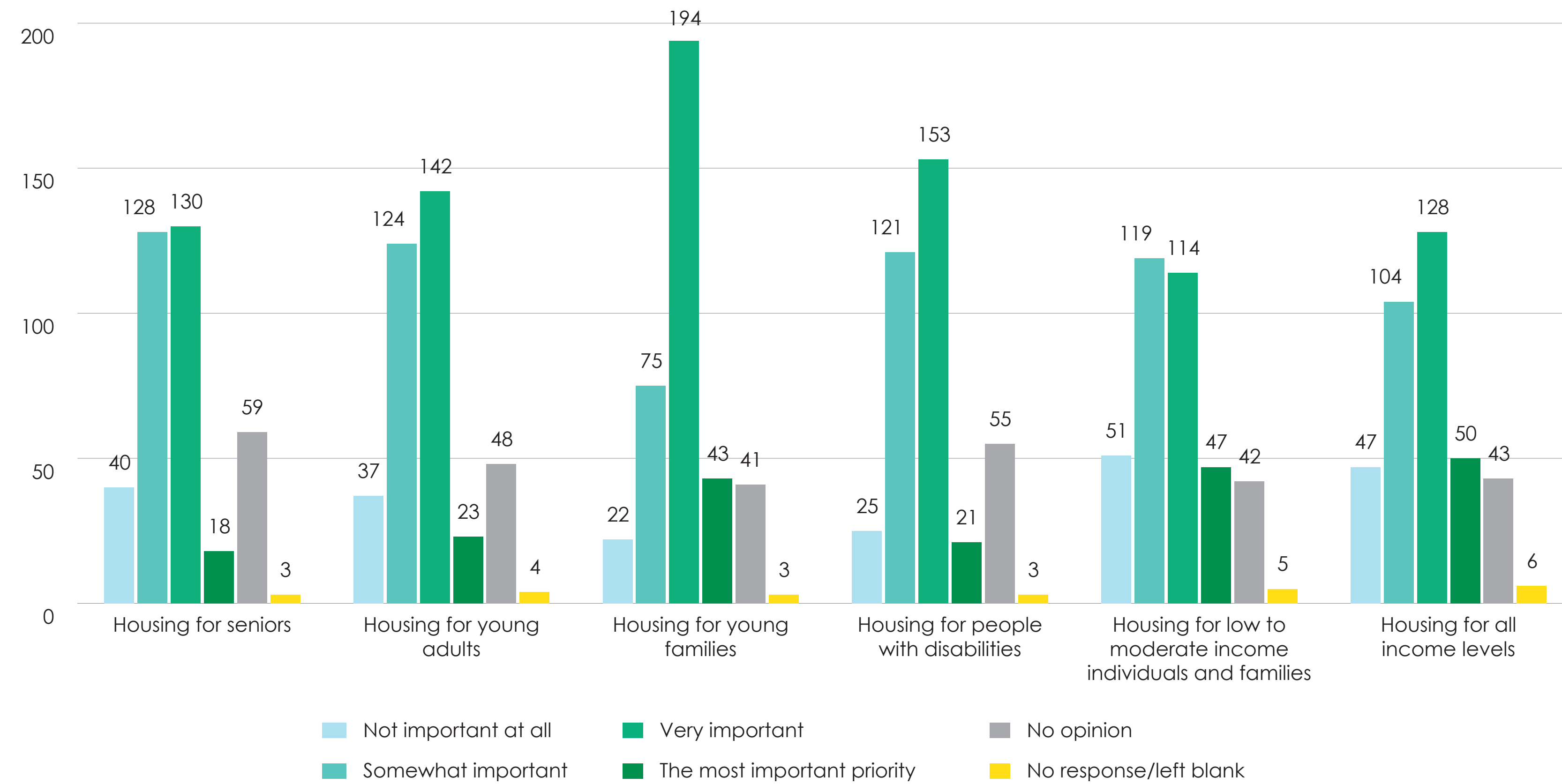
Survey Results

The Master Plan Update Subcommittee opted for two public engagement efforts: townhall events and a survey. Both efforts invited city residents and stakeholders to share their opinions about the Master Plan update topic areas: Downtown, Transportation, Housing, and Environment, Resilience, and Sustainability.

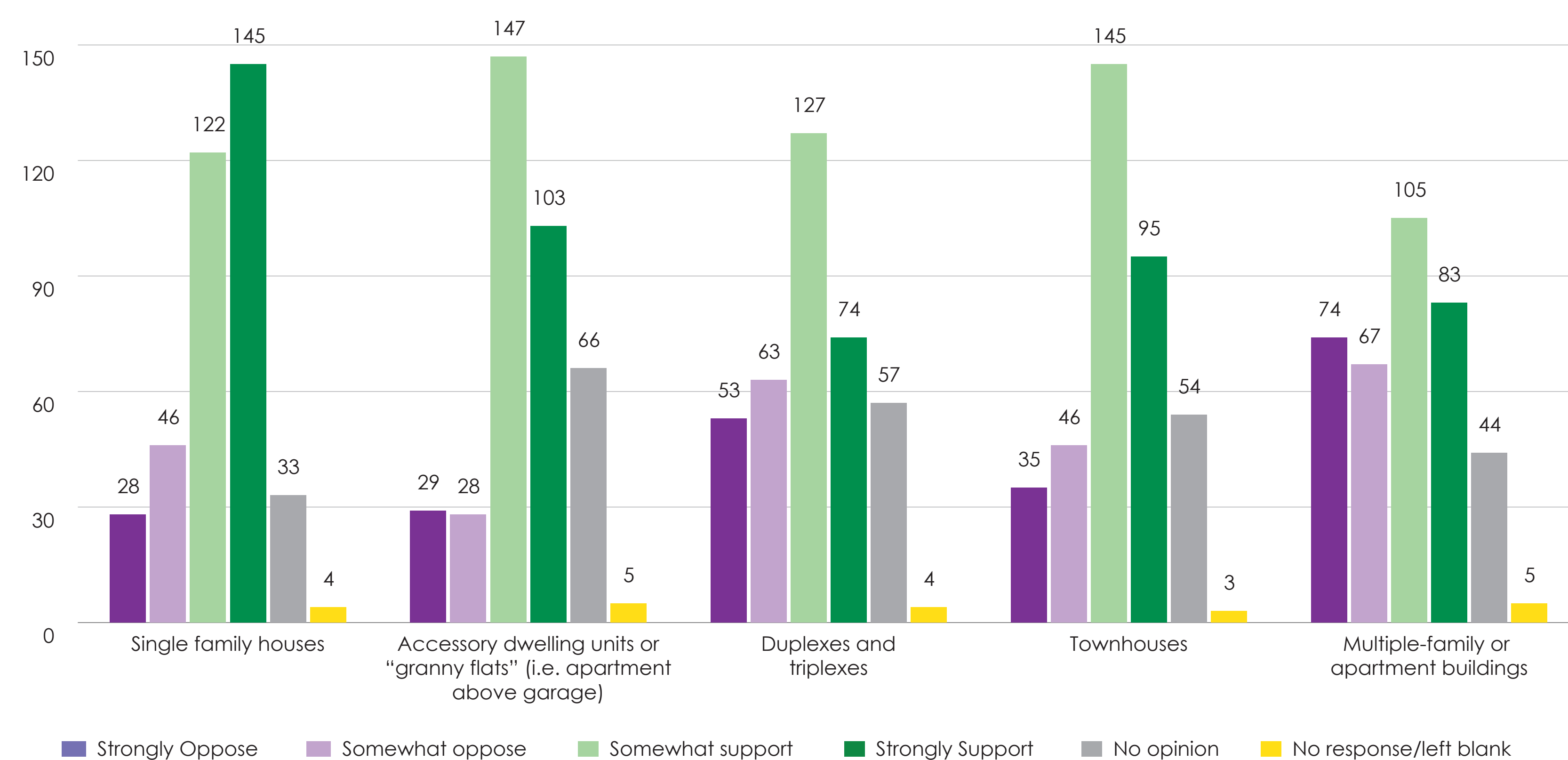
The survey was announced and electronically distributed through the City's emails lists, website, and social media platforms. The Saline Area Schools also distributed the survey through their email lists. Respondents had the option to complete the survey online through a link shared in the announcement, or to request a paper copy from the city office. All of the survey responses were submitted electronically. Answers to open-ended questions will be coded and included in the draft Master Plan document.

HOUSING

Q10. How important is it for more housing to be built in the City of Saline that meets the needs of the following groups?

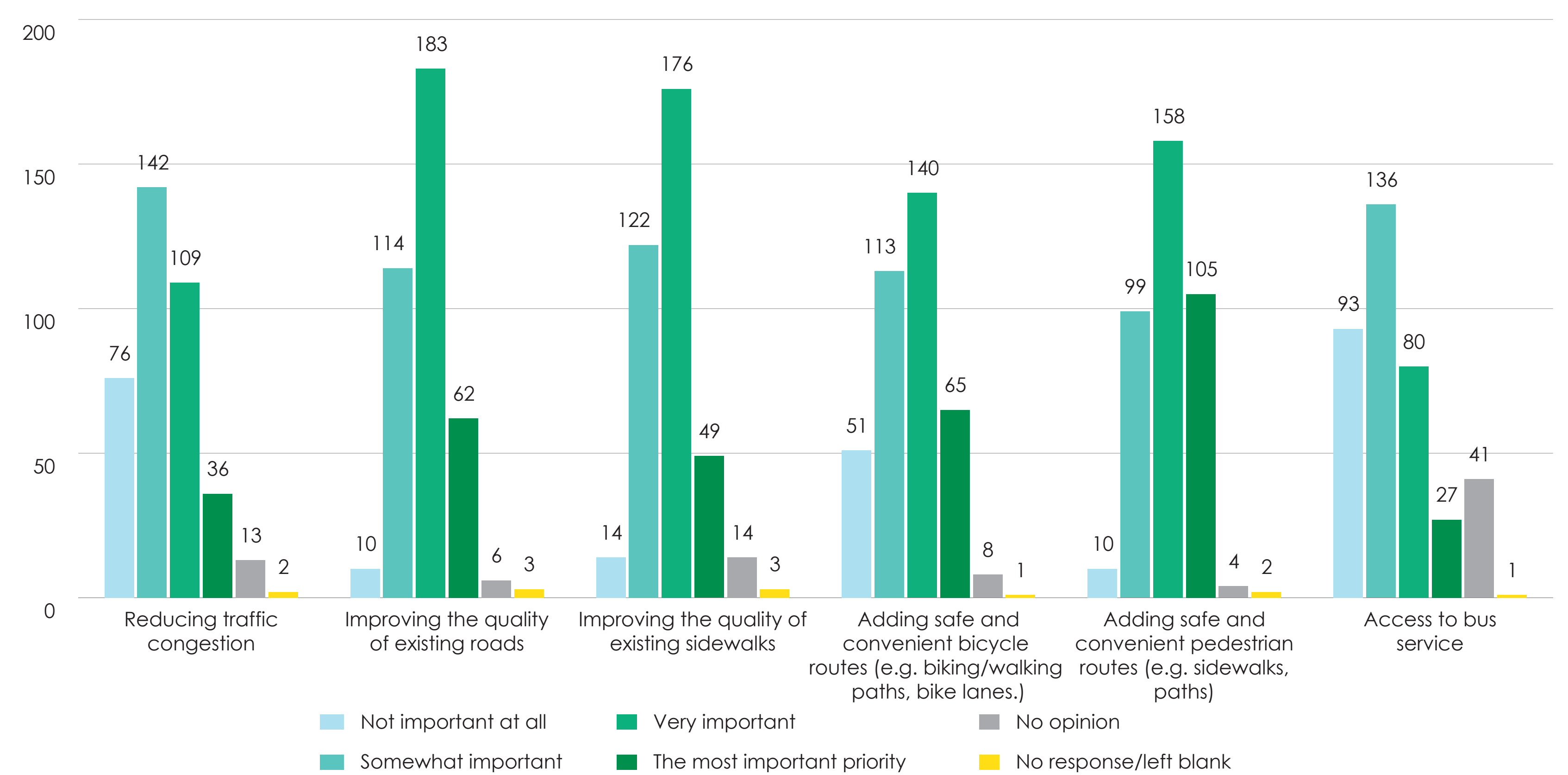


Q11. How much do you support the following types of housing being built in the City of Saline?

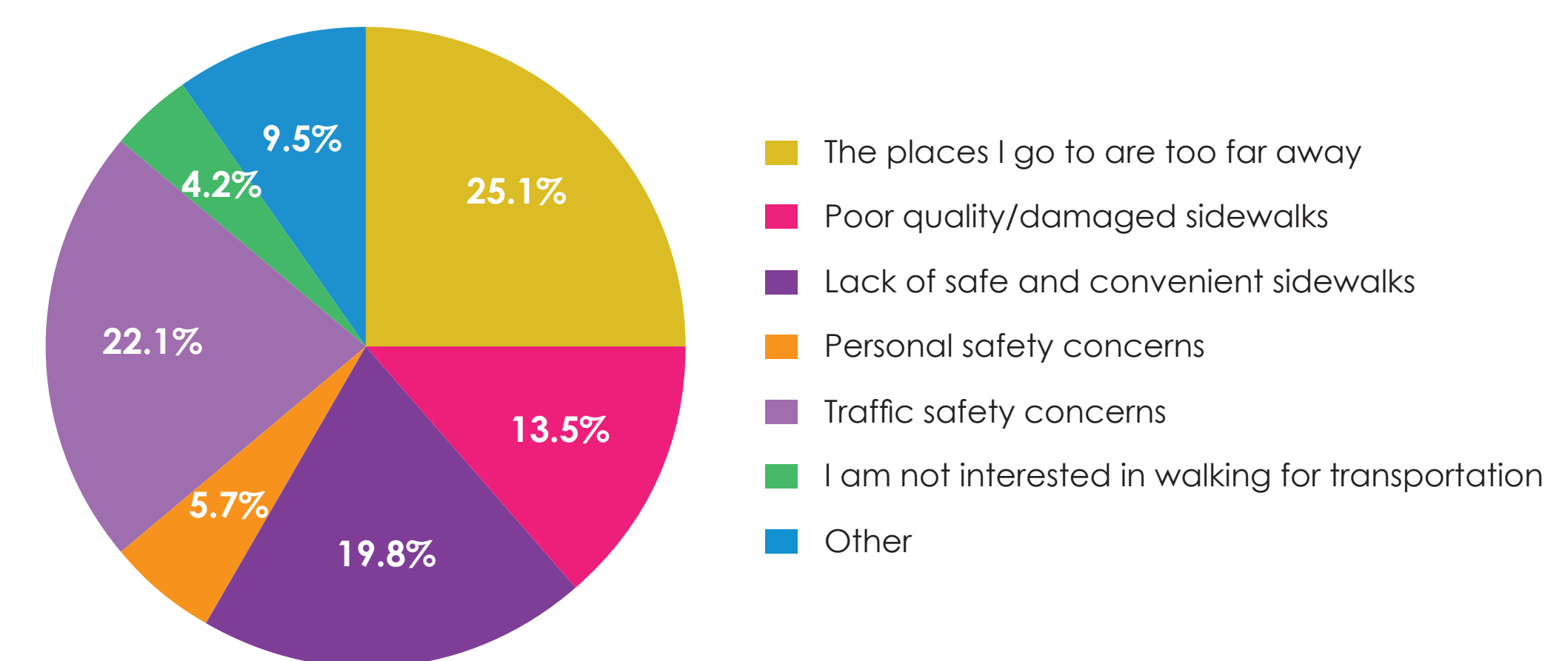


TRANSPORTATION

Q13. Please rate how you prioritize the following initiatives related to transportation and accessibility in the City of Saline:



Q14. What prevents you from walking in the City of Saline? (Select all that apply):



Survey Results

MASTER PLAN UPDATE

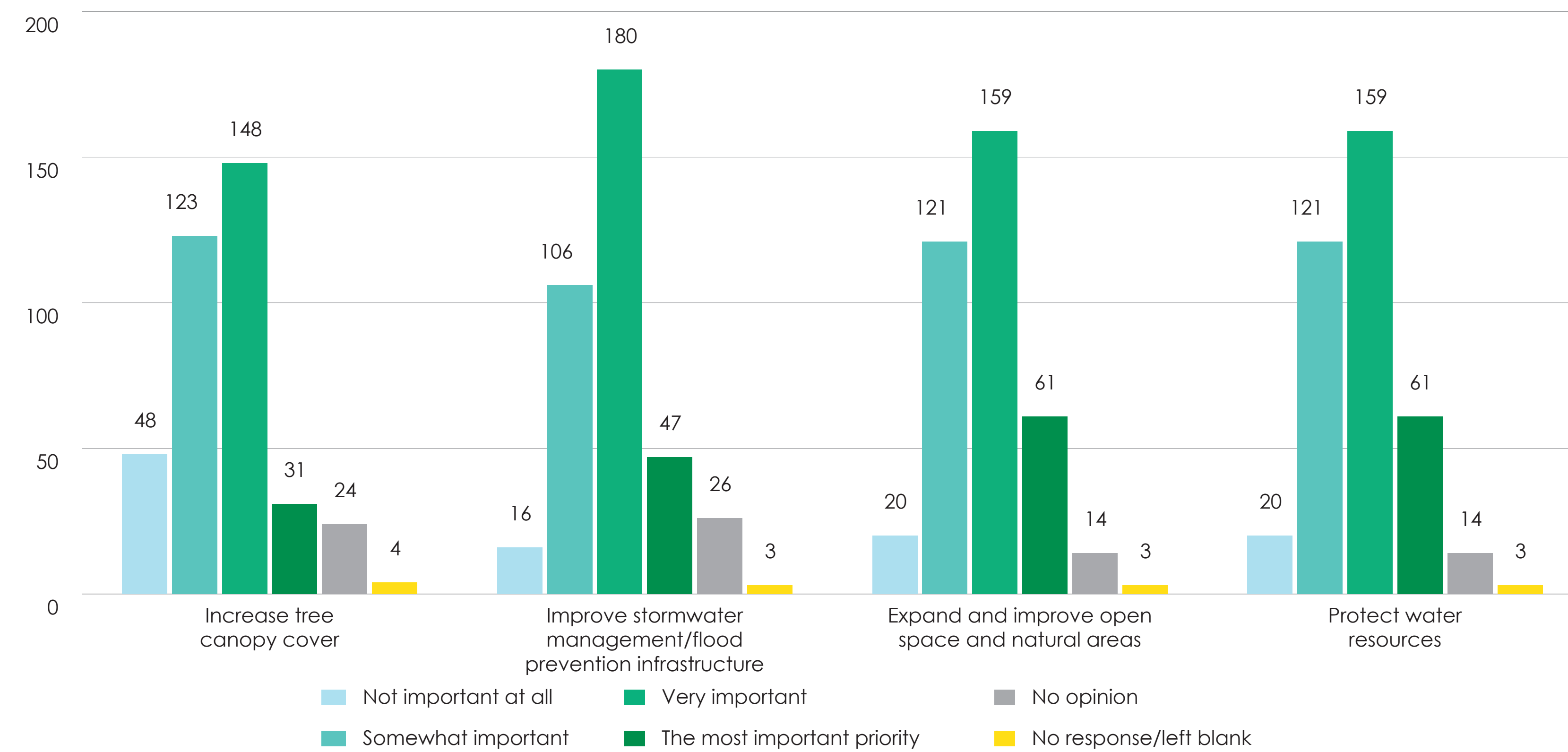
Draft Community Engagement Summary

The Master Plan Update Subcommittee opted for two public engagement efforts: townhall events and a survey. Both efforts invited city residents and stakeholders to share their opinions about the Master Plan update topic areas: Downtown, Transportation, Housing, and Environment, Resilience, and Sustainability.

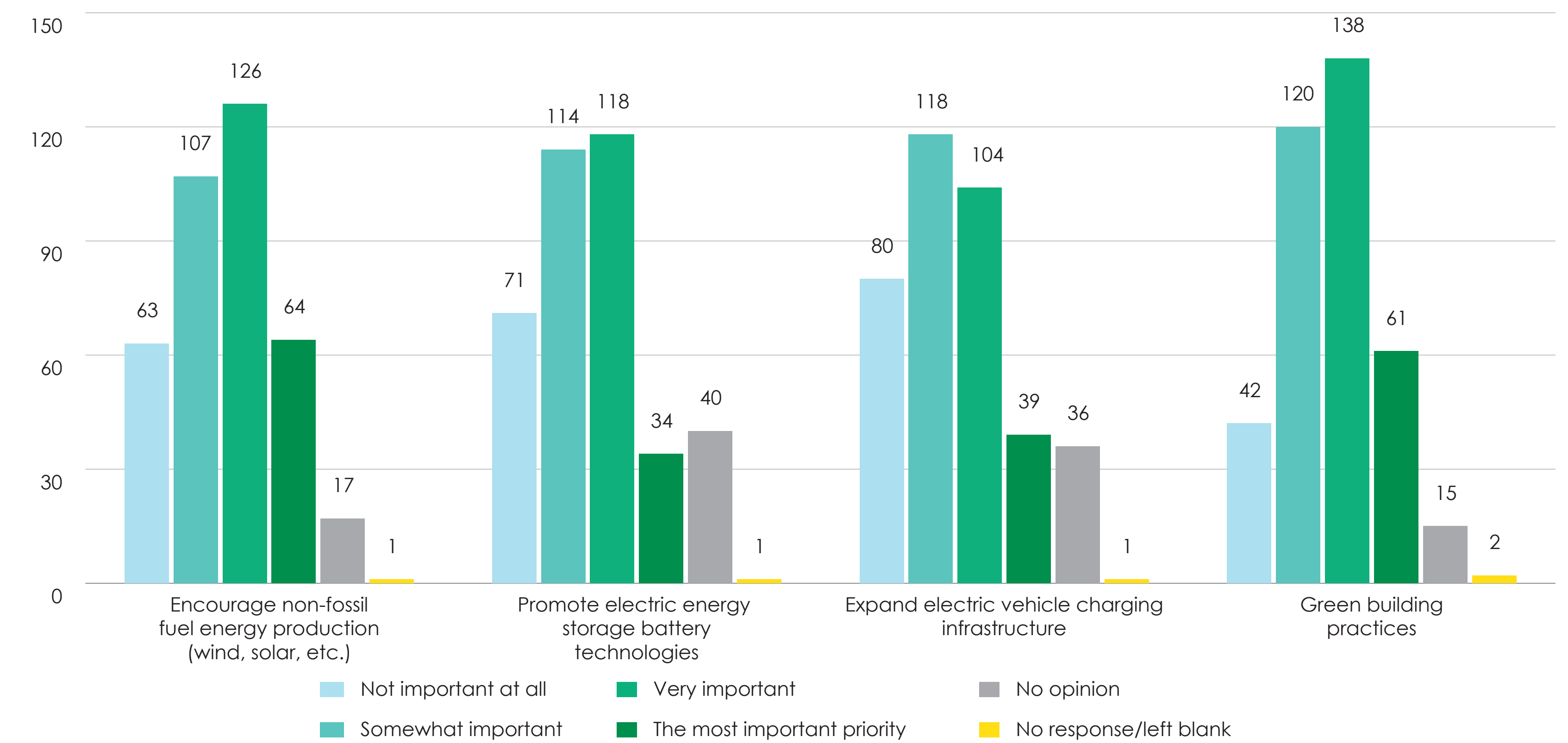
The survey was announced and electronically distributed through the City's emails lists, website, and social media platforms. The Saline Area Schools also distributed the survey through their email lists. Respondents had the option to complete the survey online through a link shared in the announcement, or to request a paper copy from the city office. All of the survey responses were submitted electronically. Answers to open-ended questions will be coded and included in the draft Master Plan document.

ENVIRONMENT, SUSTAINABILITY, RESILIENCE

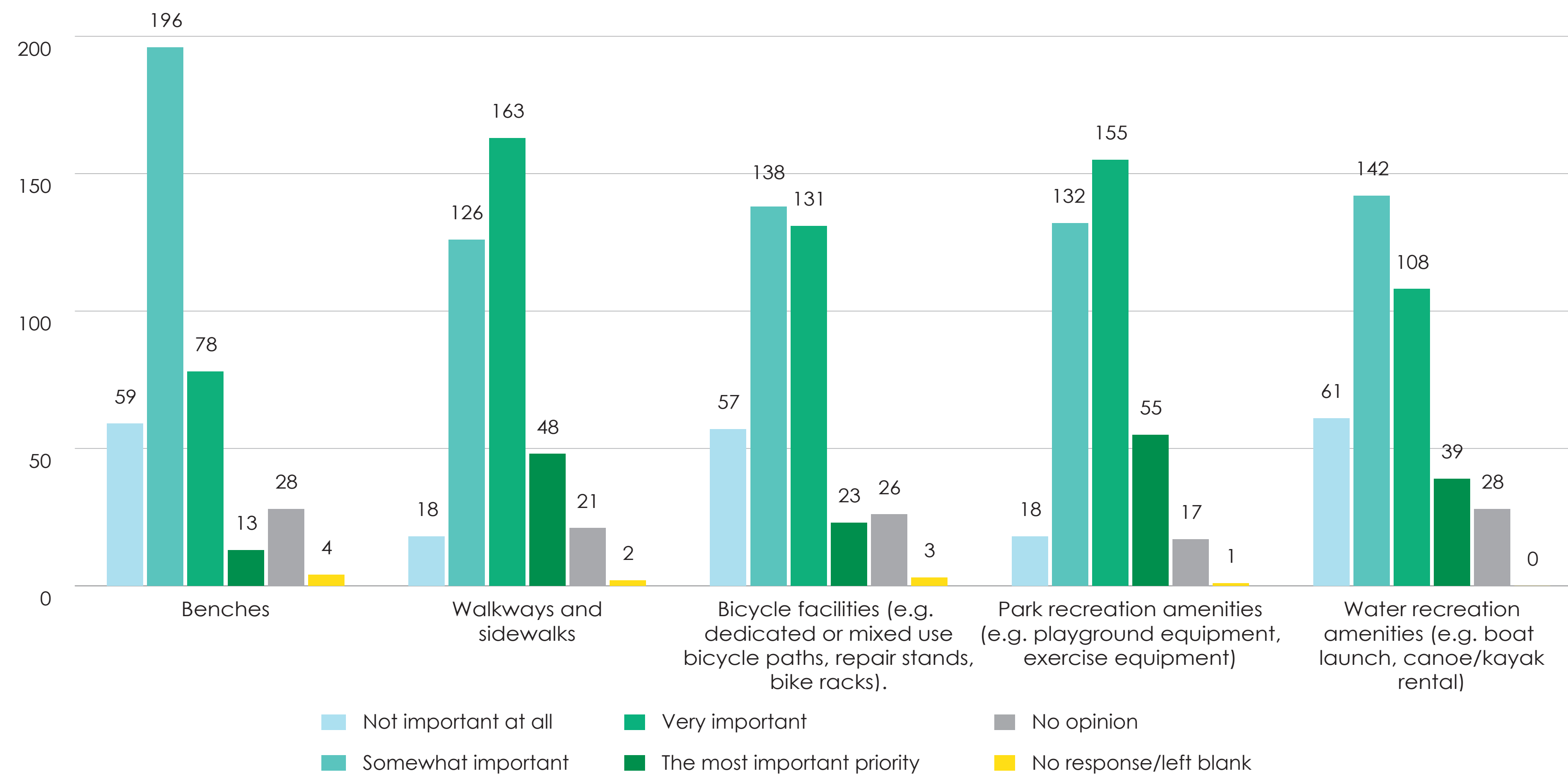
Q16. Please rate how you prioritize the following natural resource sustainability initiatives:



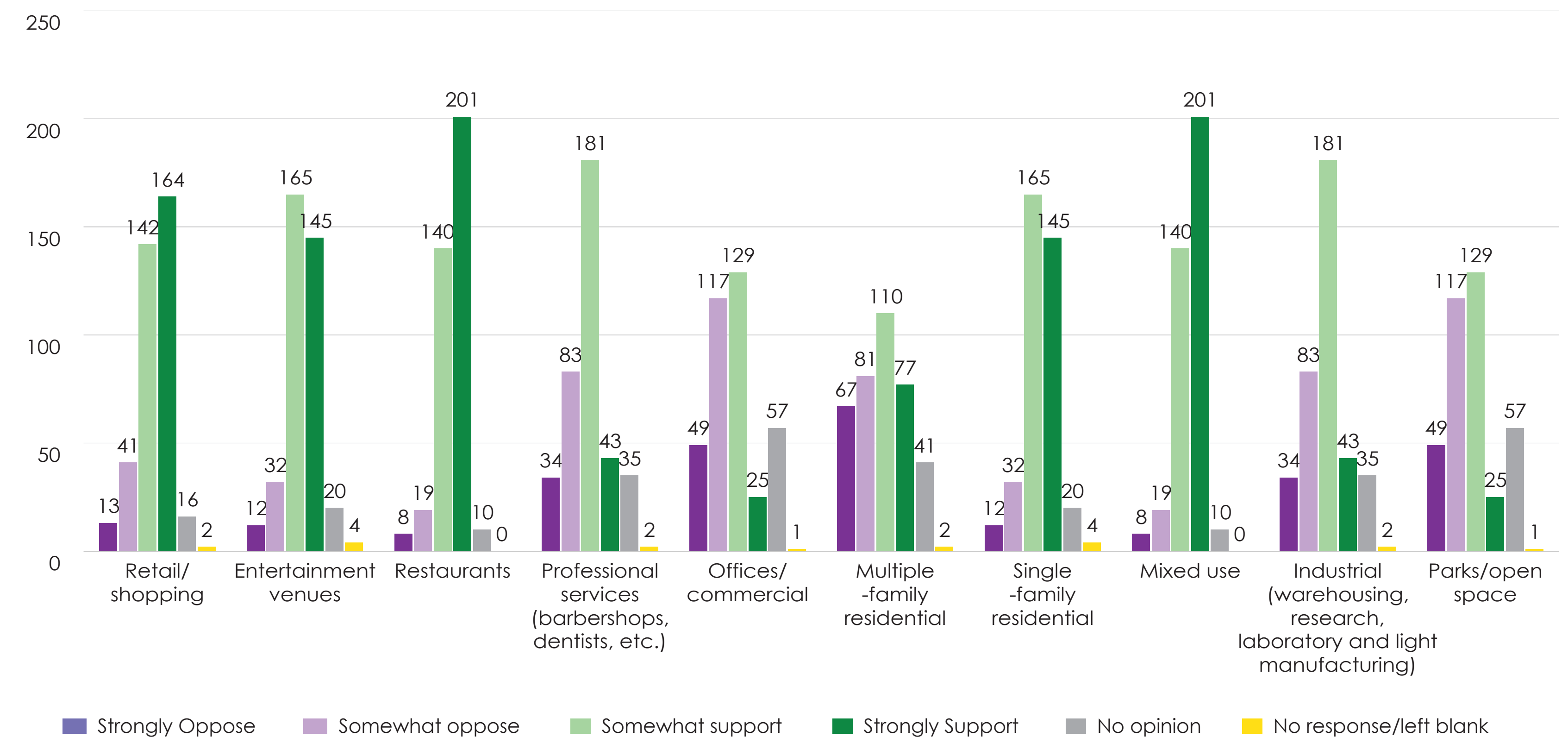
Q18. Please rate how you prioritize the following energy sustainability initiatives:



Q17. Please rate how you prioritize adding more of the following amenities in the City of Saline's parks:



Q20. Most of the land area in the City of Saline has already been developed or preserved as parks and open space. However, several areas in the City may be developed or redeveloped with new buildings and uses. In general, how much do you support more of the following land uses in the City of Saline?



Sub Area Map

MASTER PLAN UPDATE

Draft Land Use and Planning Maps

CURRENT

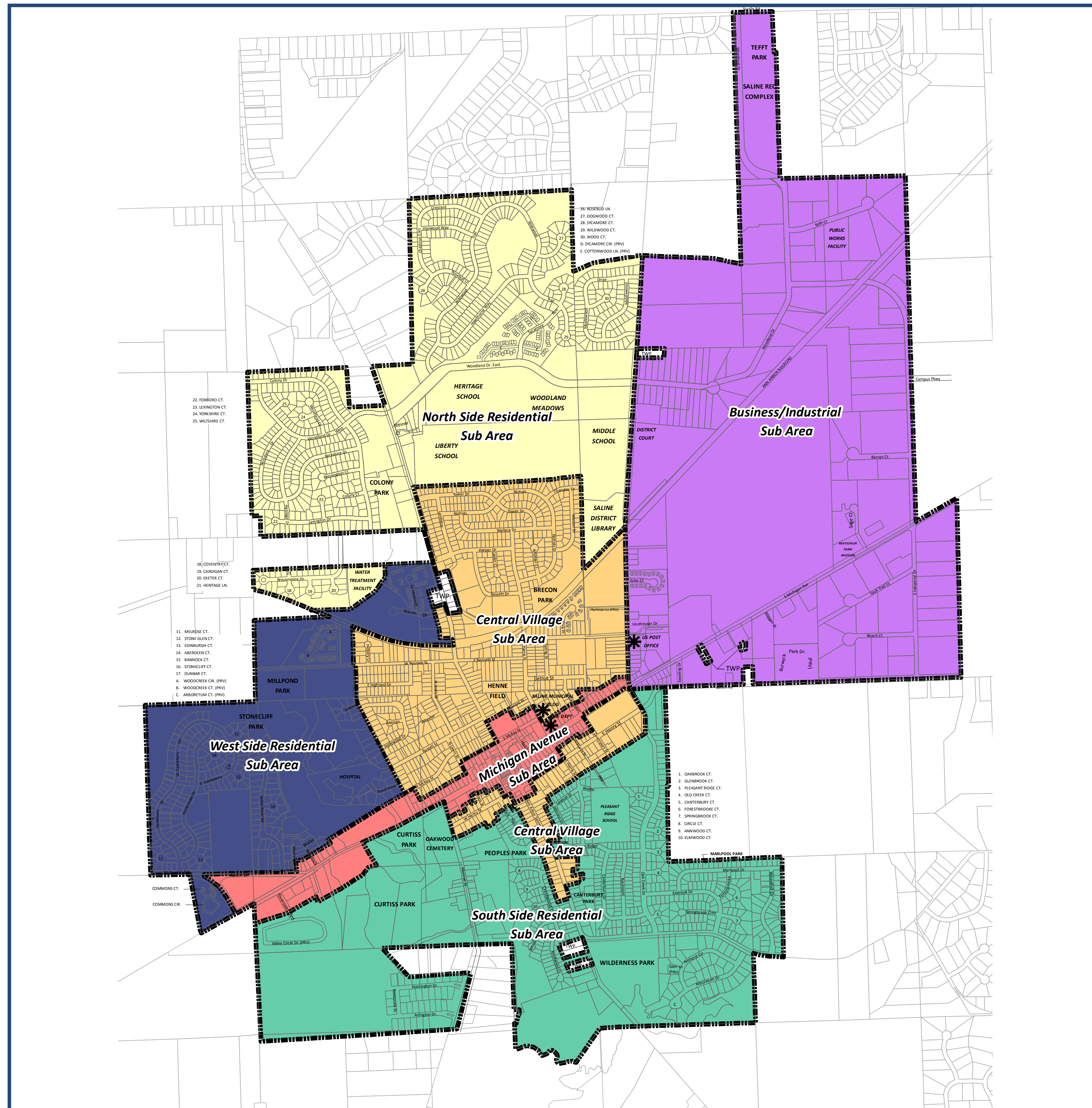
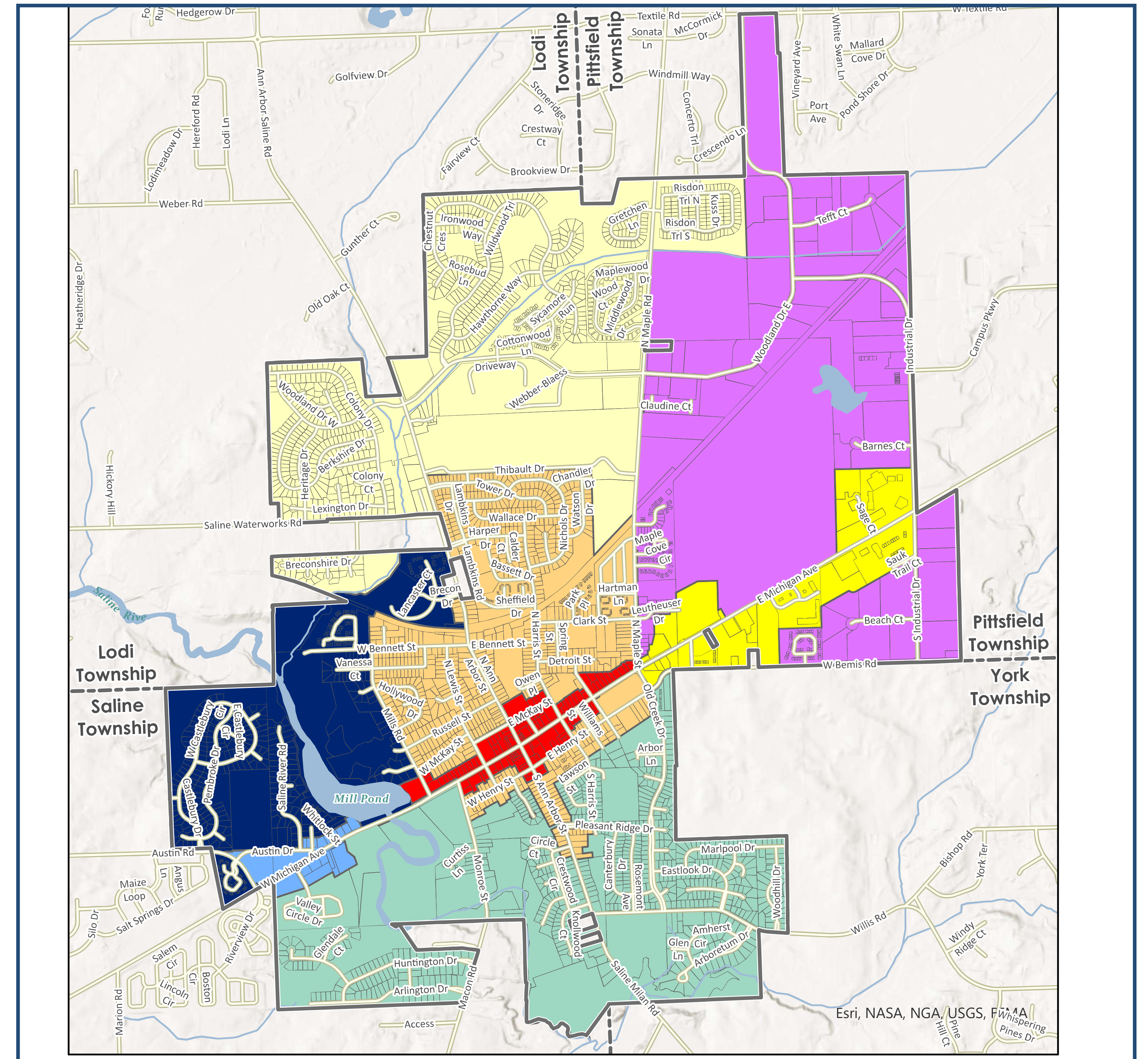


Figure 4
SUB AREAS
City of Saline, Washtenaw County

Scale: 0 250 500 1,000 1,500 2,000 Feet

2-24-2017
Carlisle/Wortman Associates

PROPOSED



- Sub Areas**
- North Side Residential Sub Area
 - West Side Residential Sub Area
 - South Side Residential Sub Area
 - Central Village Sub Area
 - Downtown Sub Area
 - Business/Industrial Sub Area
 - East Michigan Avenue Sub Area
 - West Michigan Avenue Sub Area

Draft
SUB AREAS
City of Saline, Washtenaw County

Scale: 0 0.25 0.5 1 Miles

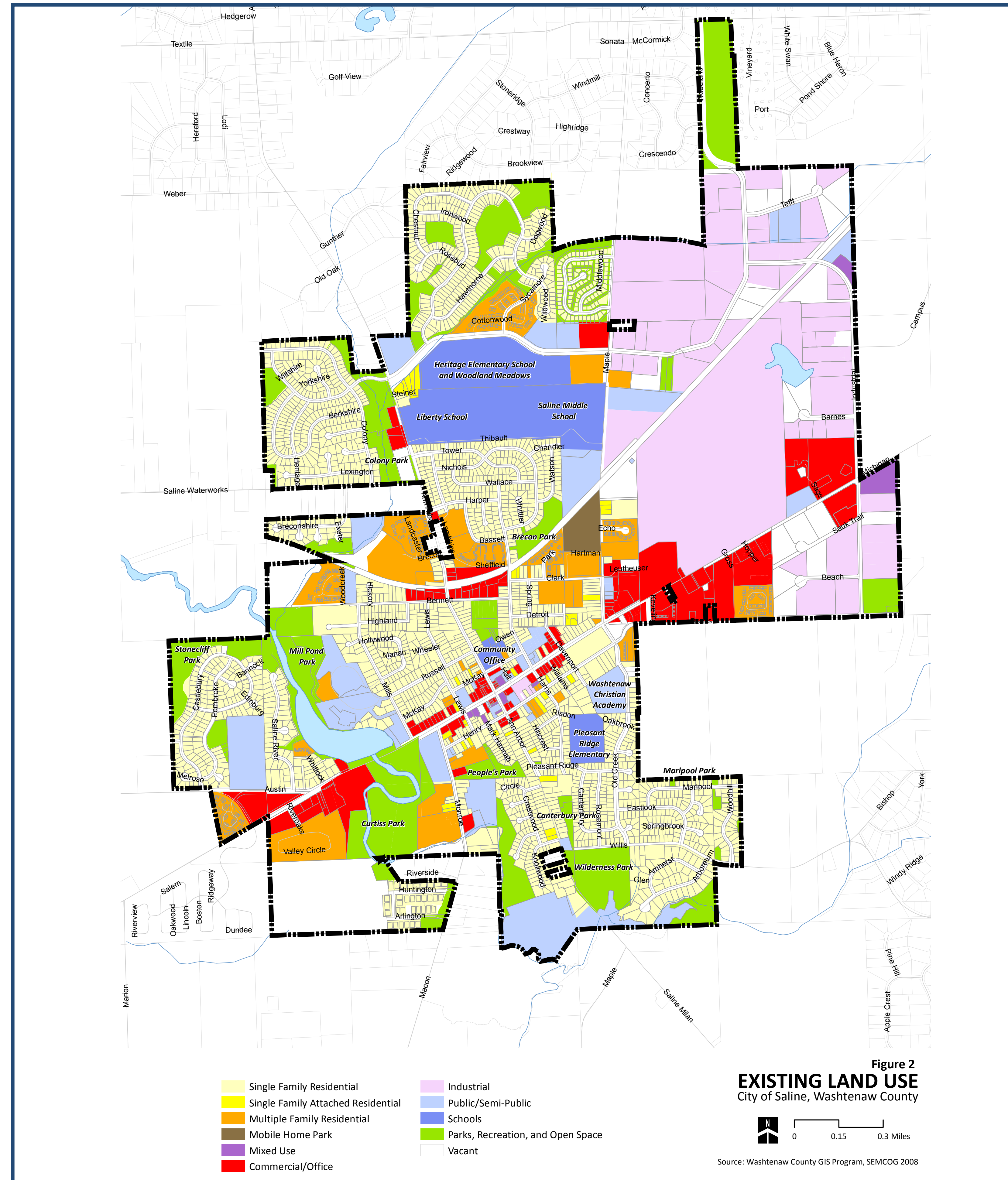
Data: City of Saline, Washtenaw County, State of Michigan GIS Open Data.
Prepared by: Carlisle/Wortman Associates, Inc.
Date: 7/28/2023

Existing Land Use Map

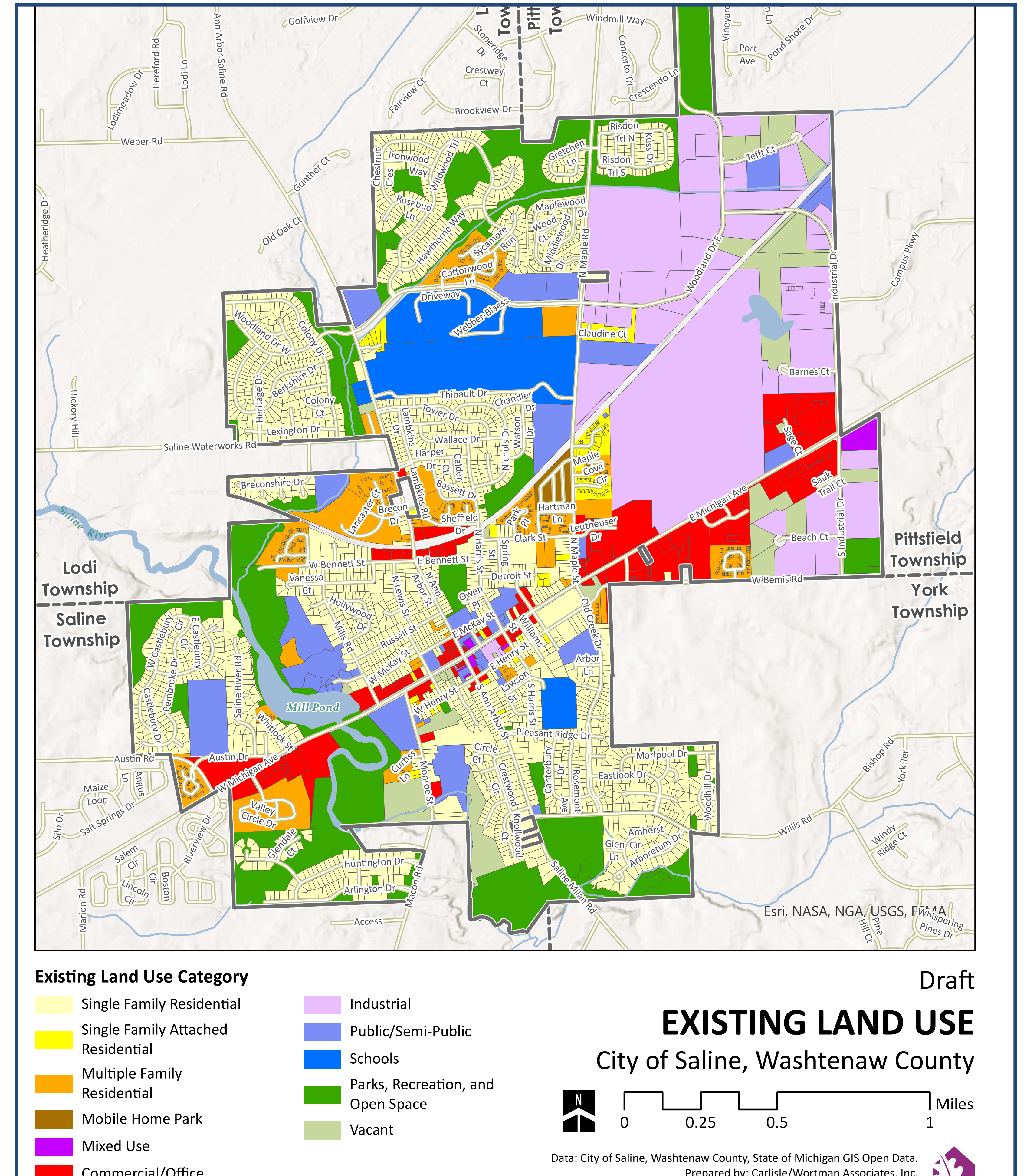
MASTER PLAN UPDATE

Draft Land Use and Planning Maps

CURRENT



PROPOSED

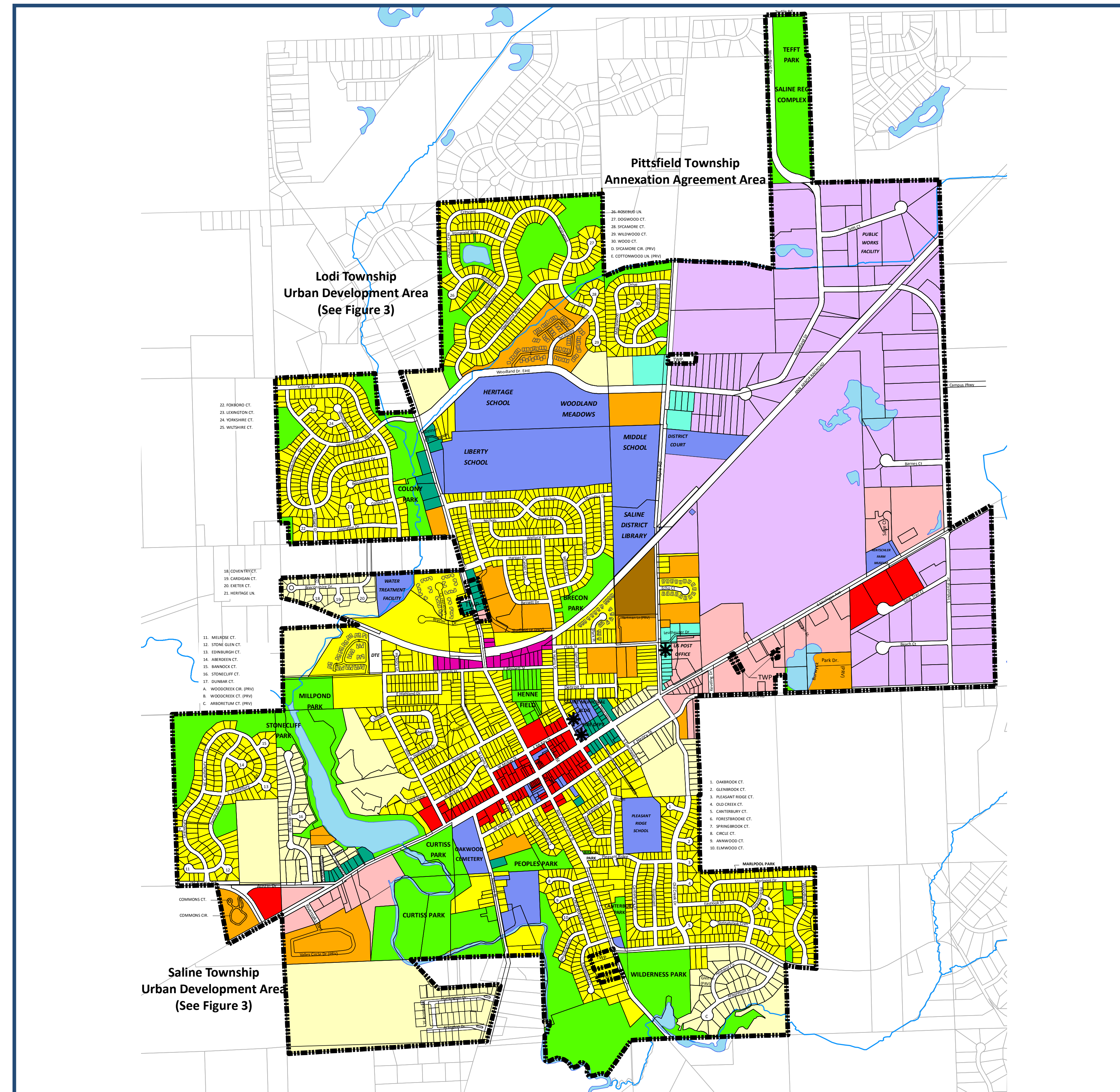


Future Land Use Map

MASTER PLAN UPDATE

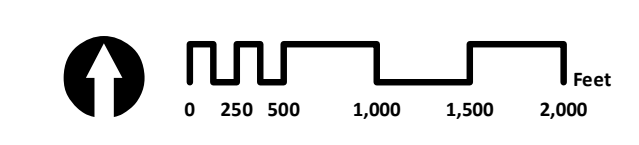
Draft Land Use and Planning Maps

CURRENT



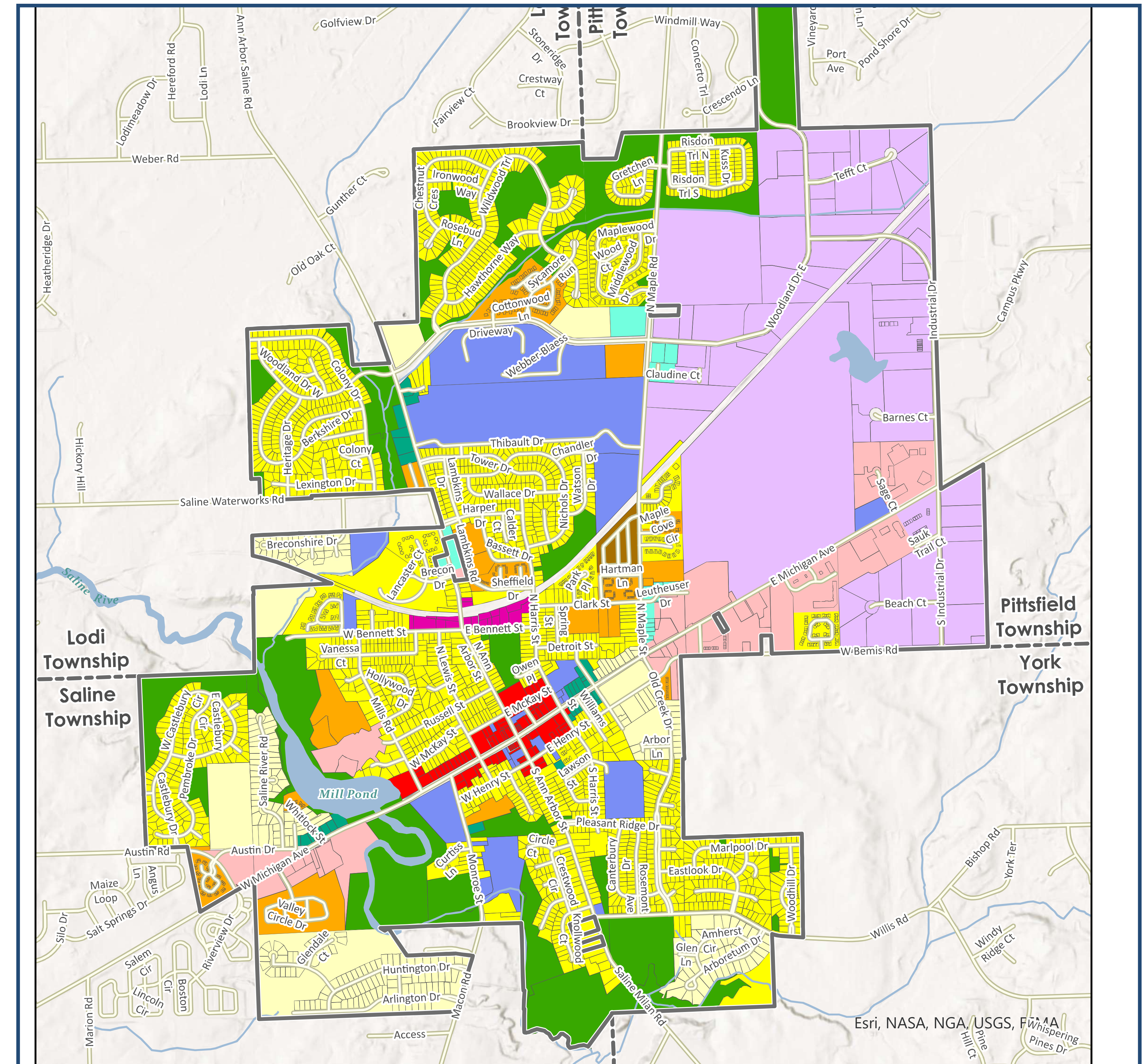
- | | |
|-----------------------------|---------------------------|
| Low Density Residential | Central Business District |
| City Density Residential | Office - Service |
| Multiple Family Residential | Professional Office |
| Mobile Home Park | Industrial |
| Public | Open Space - Recreation |
| General Business | Mixed Use Business |

Figure 4
FUTURE LAND USE
City of Saline, Washtenaw County

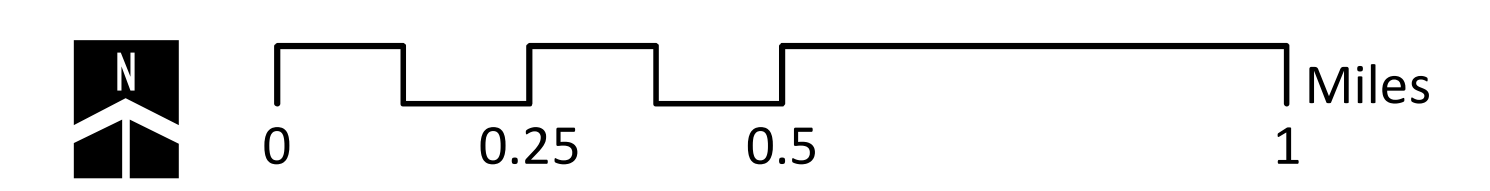


3-17-2017

PROPOSED



- Future Land Use Category**
- | | |
|--------------------------|-----------------------|
| Low Density Residential | Office - Service |
| City Density Residential | Professional Office |
| High Density Residential | Industrial |
| Mobile Home Park | Open Space/Recreation |
| Public/Semi-Public | Mixed Use |
| General Business | |
| Downtown District | |



Data: City of Saline, Washtenaw County, State of Michigan GIS Open Data.
Prepared by: Carlisle/Wortman Associates, Inc.

Draft

FUTURE LAND USE

City of Saline, Washtenaw County